



Beacon
Calendar Line™



**American Automotive
Assistants**

250 East Avenue • Rockford, IL 61101
800.222.3456 phone • 800.222.3456 fax



An American Illustrator



2007
Appointment Calendar

Pioneer Bank of America
"Your Hometown Banking Friends"

638 North Broadway
Rockford, IA 61651



INTEGRITY



MOTIVATIONS



2007 Appointment Calendar

Beacon Consultants

"Innovative and dependable strategic planning support"

12 Olsen Blvd., Suite 112 • Haleson, NY 13655

Phone 800.222.3456 Fax 800.111.2345

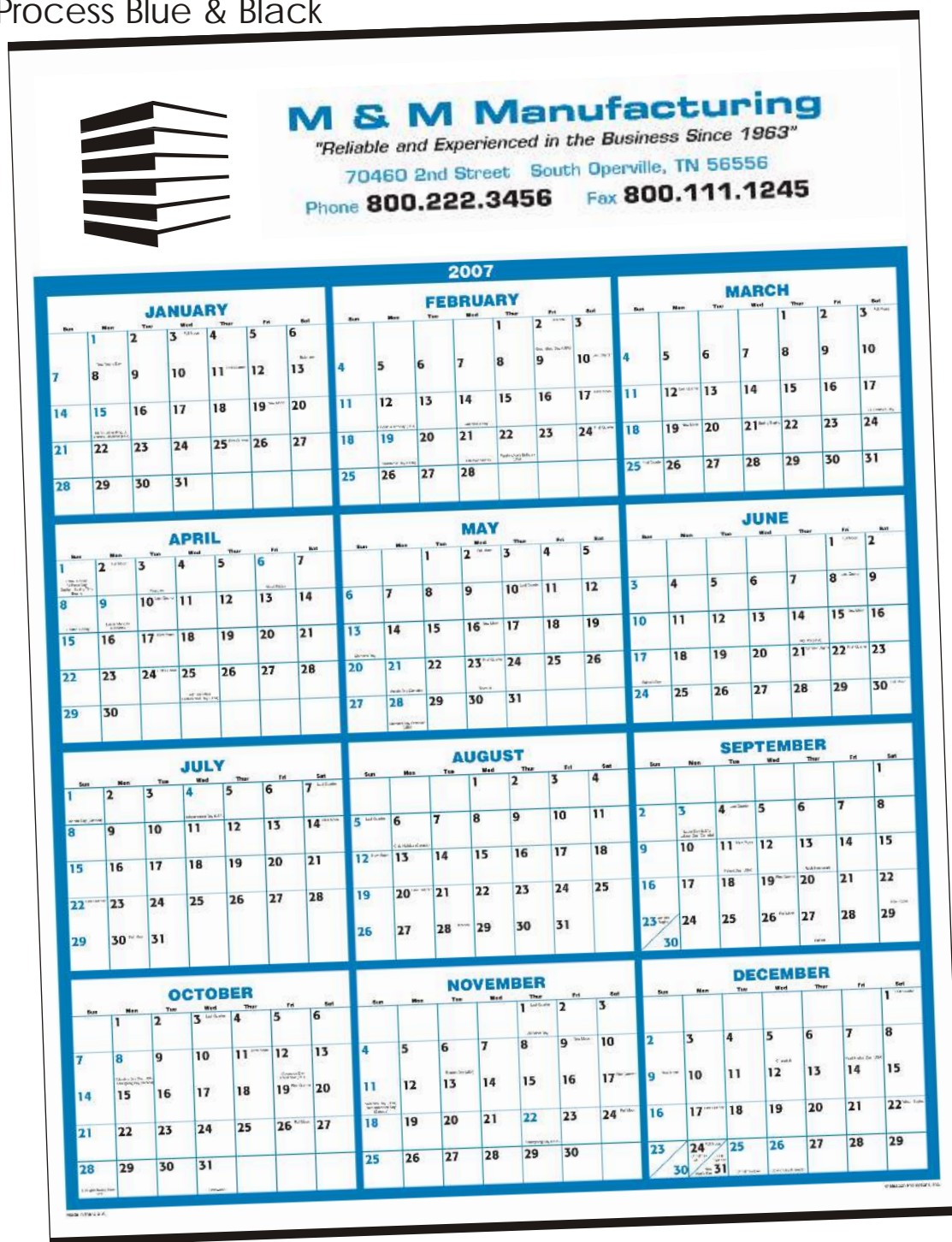
2007

Effective January 1, 2006 –
December 31, 2006

FULL YEAR VIEW

100 Process Blue & Black

Commercial



Pricing			100-249	250-499	500+
100	Each thru	7-31-06	2.12	1.96	1.80
100	Each after	7-31-06	2.25	2.09	1.92

This calendar has a full year view format and is tinned at the top and bottom. It also includes a plastic loop for hanging.

Stock Border Color, Pantone Matching System
Style 100 matches Process Blue.

Pantone is a registered trademark of Pantone, Inc.

Single sheet.

Paper Stock 80 lb. matte.

Size: 22" x 29"

Imprint: 21" x 4 3/4"

Standard Imprint Black.

Other Colors See General Information.

Each Additional Color \$1.00 (G) set-up charge, plus \$.11 (G) each running. Specify colors; see General Information.

Change of Copy \$3.50 (G) each.

Packaging kraft tube, calendars inserted: \$.38 (G) each.

Approximate Shipping Bulk, 36 lbs. per 208; tubed, 18 lbs. per 50.

Oversize carton charges will apply. Tubed only.

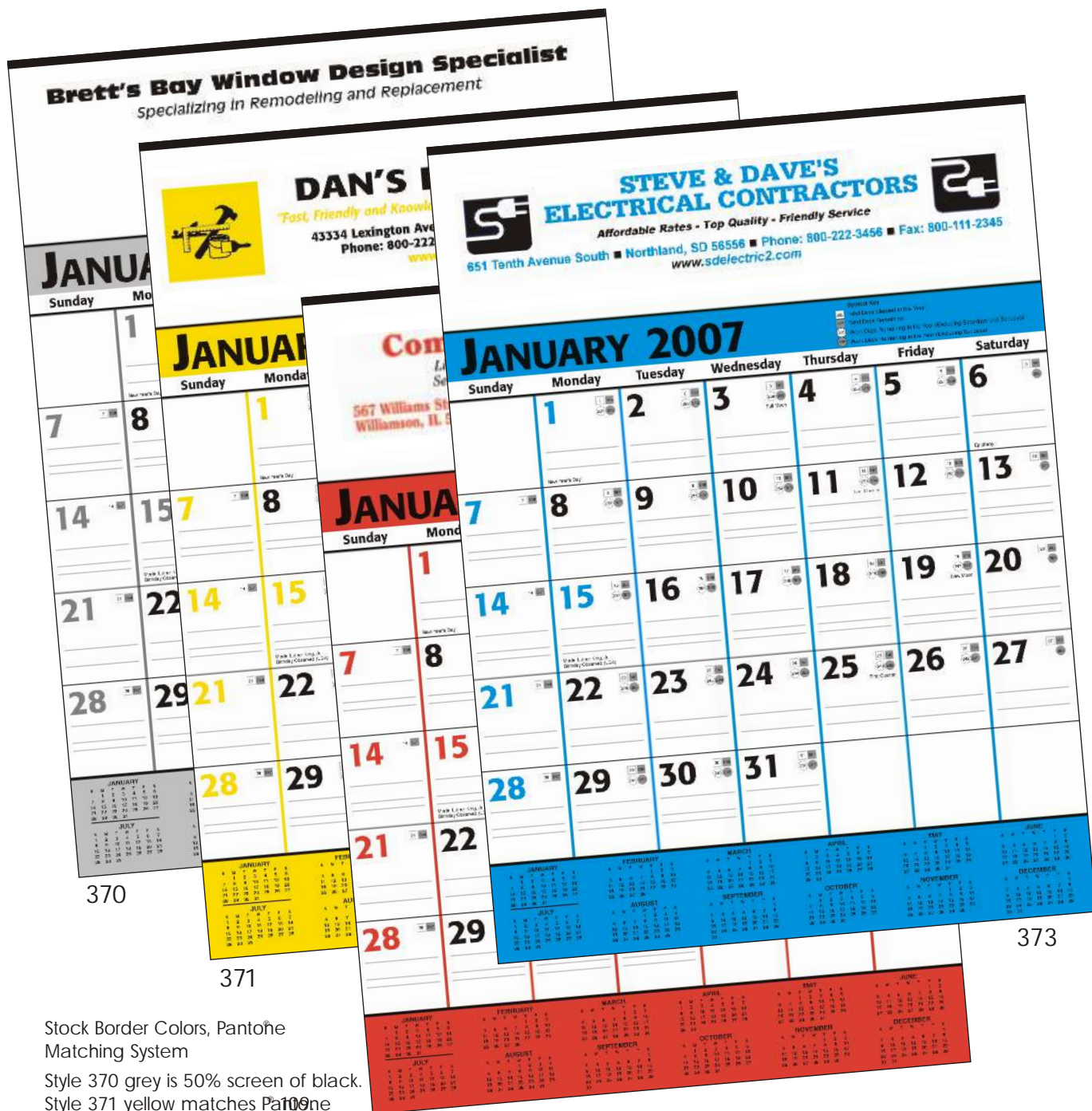
COMMERCIAL PLANNERS

370 Grey & Black

371 Yellow & Black

372 Red & Black

373 Blue & Black



370

371

372

373

Stock Border Colors, Pantone Matching System

Style 370 grey is 50% screen of black.

Style 371 yellow matches Pantone

Style 372 red matches Pantone

Style 373 blue matches cyan.

Pantone is a registered trademark of Pantone, Inc.

Pricing		50-249	250-499	500+
All colors thru 7-31-06		6.39	5.31	4.25
All colors after 7-31-06		6.87	5.80	4.72

This commercial planner has date blocks that contain faintly ruled lines and symbols denoting the days elapsed and remaining in the year. The December top sheet included at no additional charge. Tinned top sheet included at no additional charge.

Combined pricing not available.

13 sheets.

Paper Stock 50 lb. offset.

Size: 18" x 25"

Imprint: 17" x 4 1/2"

Standard Imprint Black.

Other Colors See General Information.

Isolated Colors \$31.00 (G) set-up charge, plus \$.17 (G) each running.

Specify colors; see General Information.

Change of Copy \$1.35 (G) each.

Packaging Kraft tube, calendars inserted: \$.38 (G) each.

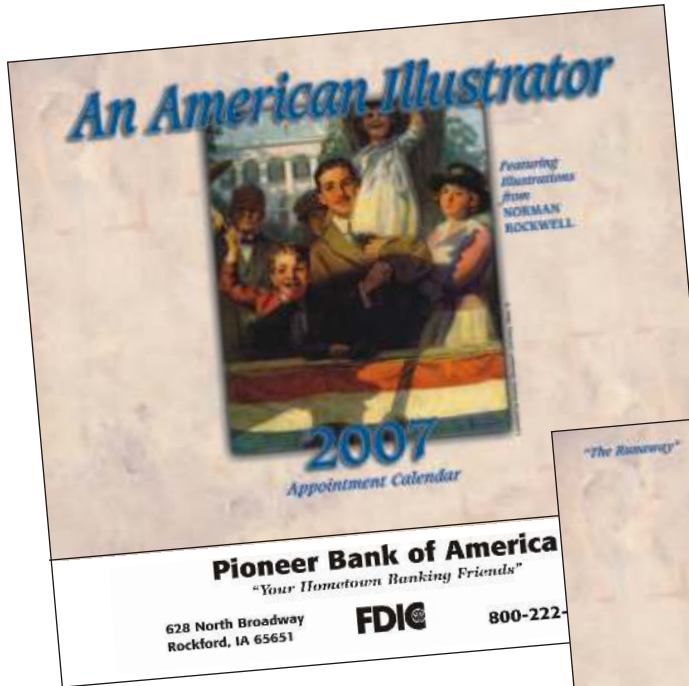
Approximate Shipping Bulk, 35 lbs. per 50; tubed, 44 lbs.

AN AMERICAN ILLUSTRATOR

Illustrations from Norman Rockwell

200 Spiral

2001 Stapled



2007

Sunday	Monday	Tuesday	Wednesday	Thursday	Friday	Saturday
	1	2	3	4	5	6
7	8	9	10	11	12	13
14	15	16	17	18	19	20
21	22	23	24	25	26	27
28	29	30	31			

Pioneer Bank of America
 "Your Hometown Banking Friends"
 628 North Broadway
 Rockford, IA 65651
FDIC
 Phone
 800-222-3456

AN AMERICAN ILLUSTRATOR

Illustrations from Norman Rockwell



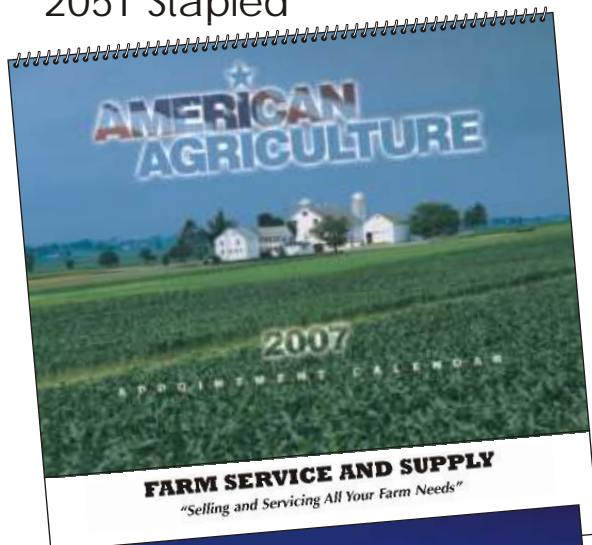
13-month calendar
Size: 10 1/2" x 18 1/4" Open 10 1/2" x 10" Closed
Imprint: 9" x 1 1/2"

Pricing			300-2499	2500+	
200	Spiral thru	7-31-06	1.11	.99	
200	Spiral after	7-31-06	1.22	1.16	
2001	Stapled thru	7-31-06	.99	.93	
2001	Stapled after	7-31-06	1.11	1.05	2C

Standard ImprintBlack.
Other ColorsSee General Information.
Second Color\$24.00 (G) set-up charge, plus \$.06 (G) each running.
Paper Stock60 lb. gloss text and UV coated cover.
PackagingPlain envelopes: Bulk \$.14 (G) each and \$.22 (G) inserted.
Polybags, calendars inserted: \$.16 (G) each.
Approximate ShippingBulk: 31 lbs. per 160 spiral; 35 lbs. per 185 stapled.

AMERICAN AGRICULTURE

205 Spiral
2051 Staped



13-month calendar

Size: 10 1/2" x 18 1/4" Open 10 1/2" x 10" Closed
Imprint: 9" x 1 1/2"

Pricing			300-2499	2500+
205	Spiral thru	7-31-06	1.11	.99
205	Spiral after	7-31-06	1.22	1.16
2051	Staped thru	7-31-06	.99	.93
2051	Staped after	7-31-06	1.11	1.05

Standard Imprint Black.

Other Colors See General Information.

Second Color \$24.00 (G) set-up charge, plus \$.06 (G) each running.

Paper Stock 60 lb. gloss text and UV coated cover.

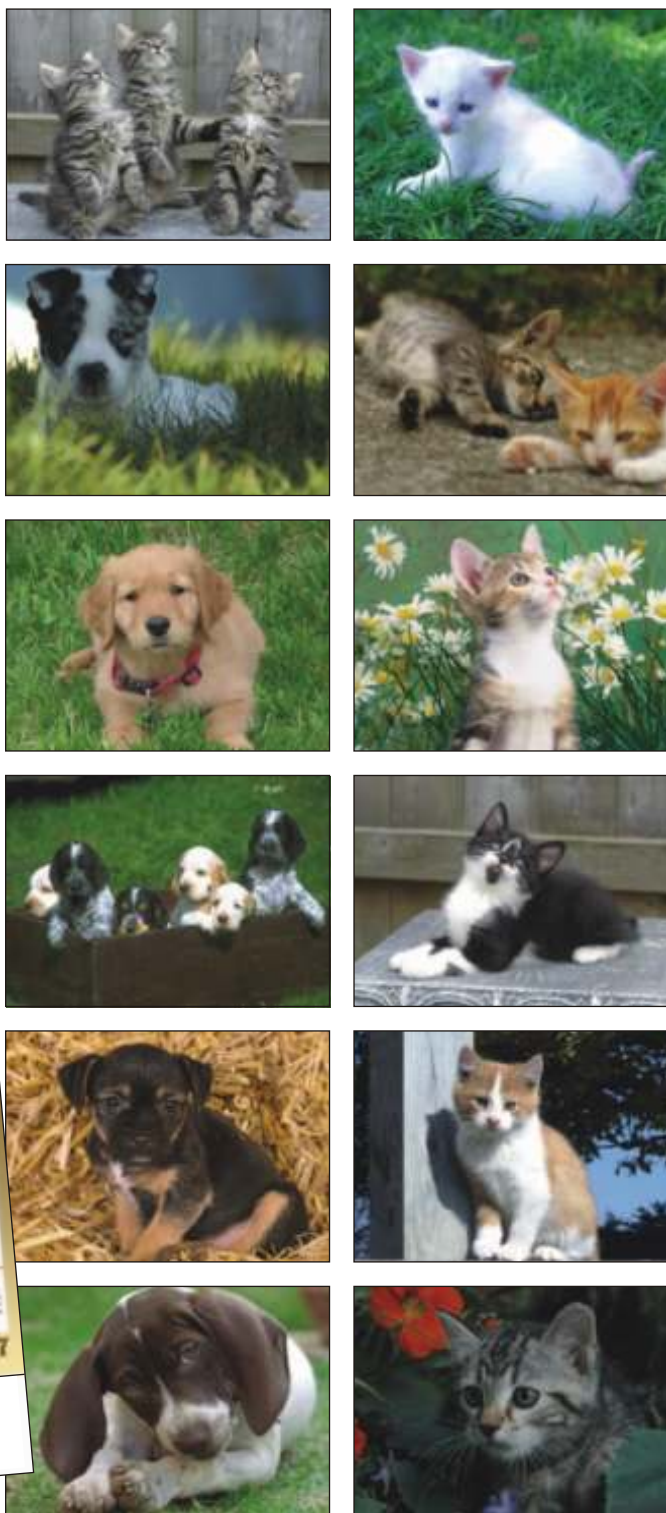
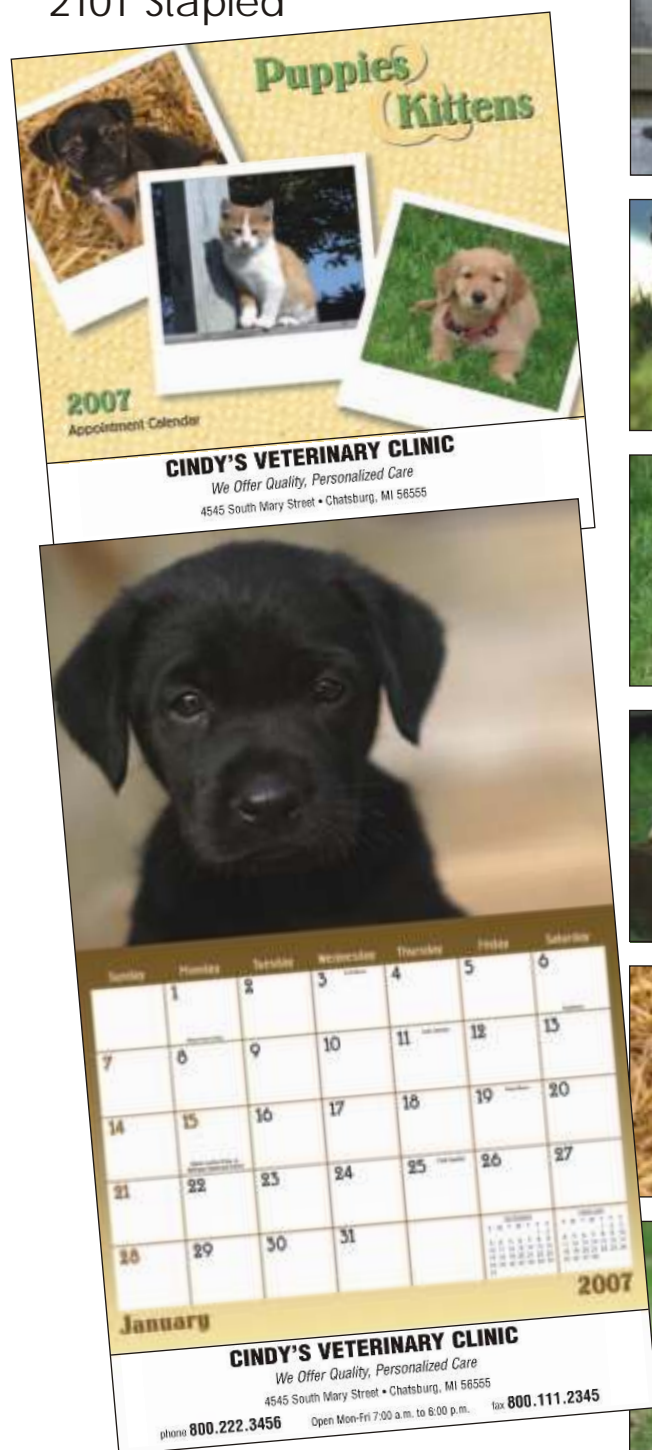
Packaging Plain envelopes: Bulk \$.14 (G) each and \$.22 (G) inserted.

Polybags, calendars inserted: \$.16 (G) each.

Approximate Shipping Bulk: 31 lbs. per 160 spiral; 35 lbs. per 185 stapled.

PUPPIES & KITTENS

210 Spiral
2101 Staped



13-month calendar
Size: 10 1/2" x 18 1/4" Open 10 1/2" x 10" Closed
Imprint: 9" x 1 1/2"

Pricing		300-2499	2500+	
210	Spiral thru	7-31-06	1.11	.99
210	Spiral after	7-31-06	1.22	1.16
2101	Staped thru	7-31-06	.99	.93
2101	Staped after	7-31-06	1.11	1.05

2C

Standard ImprinBlack.
Other ColorsSee General Information.
Second Color\$24.00 (G) set-up charge, plus \$.06 (G) each running.
Paper Stock60 lb. gloss text and UV coated cover.
PackagingPlain envelopes: Bulk \$.14 (G) each and \$.22 (G) inserted.
Polybags, calendars inserted: \$.16 (G) each.
Approximate ShippingBulk: 31 lbs. per 160 spiral; 35 lbs. per 185 staped.

DINING DELIGHTS

215 Spiral
2151 Stapled



Angie's Catering
— Available for Large Parties and Banquets —



Angie's Catering
— Available for Large Parties and Banquets —
204 Carroll Street • Kansas City, KS 66555
Phone (800) 222-3456 • Fax (800) 111-2345



13-month calendar
Size: 10 1/2" x 18 1/4" Open 10 1/2" x 10" Closed
Imprint: 9" x 1 1/2"

Pricing		300-2499	2500+	
215	Spiral thru	7-31-06	1.11	.99
215	Spiral after	7-31-06	1.22	1.16
2151	Stapled thru	7-31-06	.99	.93
2151	Stapled after	7-31-06	1.11	1.05

2C

Standard Imprint.

Other Colors See General Information.

Second Color \$24.00 (G) set-up charge, plus \$.06 (G) each running.

Paper Stock 60 lb. gloss text and UV coated cover.

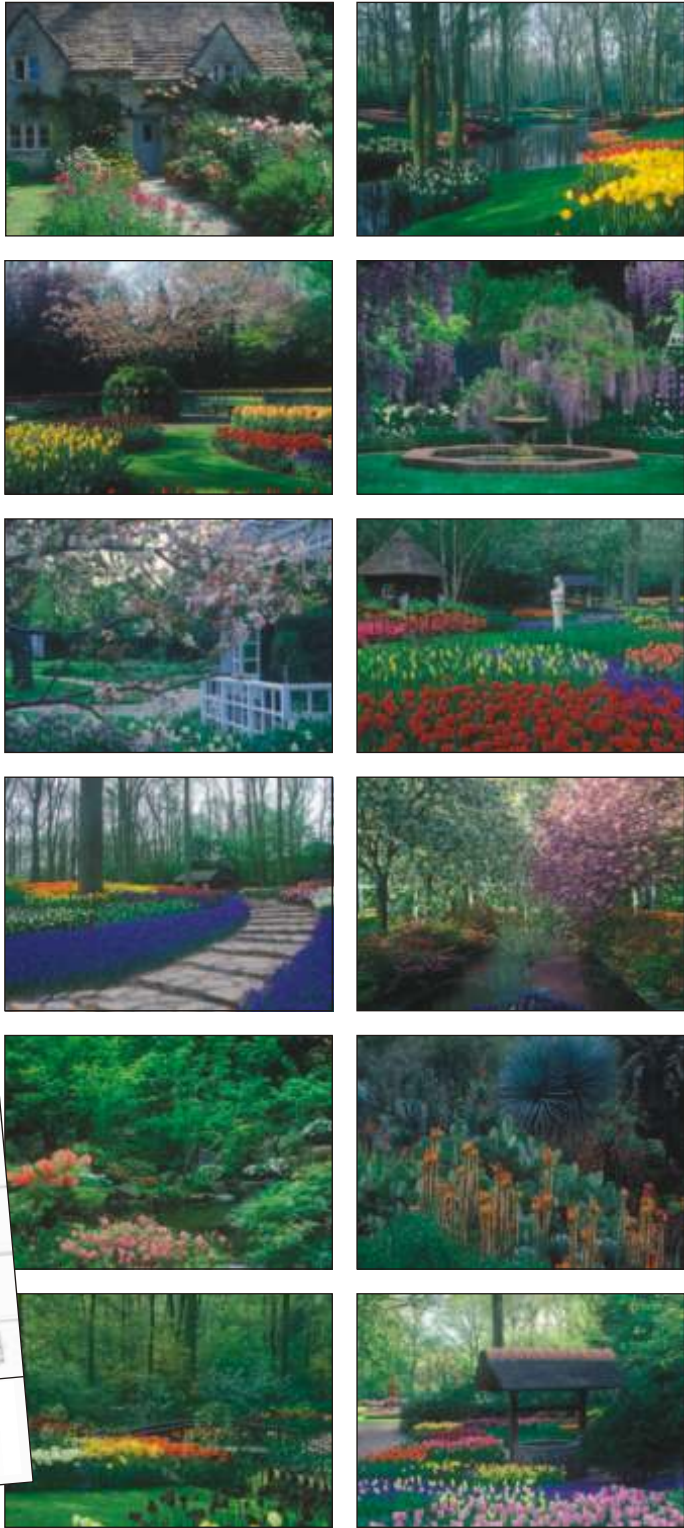
Packaging Plain envelopes: Bulk \$.14 (G) each and \$.22 (G) inserted.

Polybags, calendars inserted: \$.16 (G) each.

Approximate Shipping Bulk: 31 lbs. per 160 spiral; 35 lbs. per 185 stapled.

GARDENS

220 Spiral
2201 Stapled



Gardens

13-month calendar
Size: 10 1/2" x 18 1/4" Open 10 1/2" x 10" Closed
Imprint: 9" x 1 1/2"

Pricing		300-2499	2500+	
220	Spiral thru 7-31-06	1.11	.99	
220	Spiral after 7-31-06	1.22	1.16	
2201	Stapled thru 7-31-06	.99	.93	
2201	Stapled after 7-31-06	1.11	1.05	2C

Standard Imprint: Black.
Other Colors: See General Information.
Second Color: \$24.00 (G) set-up charge, plus \$.06 (G) each running.
Paper Stock: 60 lb. gloss text and UV coated cover.
Packaging: Plain envelopes: Bulk \$.14 (G) each and \$.22 (G) inserted.
Polybags, calendars inserted: \$.16 (G) each.
Approximate Shipping Bulk: 31 lbs. per 160 spiral; 35 lbs. per 185 stapled.

GOLF

225 Spiral
2251 Stapled



13-month calendar
Size: 10 1/2" x 18 1/4" Open 10 1/2" x 10" Closed
Imprint: 9" x 1 1/2"

Pricing		300-2499		2500+
225	Spiral thru 7-31-06	1.11	.99	
225	Spiral after 7-31-06	1.22	1.16	
2251	Stapled thru 7-31-06	.99	.93	
2251	Stapled after 7-31-06	1.11	1.05	2C

Standard Imprint: Black.
Other Colors: See General Information.
Second Color: \$24.00 (G) set-up charge, plus \$.06 (G) each running.
Paper Stock: 60 lb. gloss text and UV coated cover.
Packaging: Plain envelopes: Bulk \$.14 (G) each and \$.22 (G) inserted.
Polybags, calendars inserted: \$.16 (G) each.
Approximate Shipping Bulk: 31 lbs. per 160 spiral; 35 lbs. per 185 stapled.

HOMES

new

285 Spiral
2851 Stapled



Homes

13-month calendar

Size: 10 1/2" x 18 1/4" Open 10 1/2" x 10" Closed
Imprint: 9" x 1 1/2"

Pricing			300-2499	2500 +	
285	Spiral thru	7-31-06	1.11	.99	
285	Spiral after	7-31-06	1.22	1.16	
2851	Stapled thru	7-31-06	.99	.93	
2851	Stapled after	7-31-06	1.11	1.05	2C

Standard ImprimBlack.

Other ColorsSee General Information.

Second Color\$24.00 (G) set-up charge, plus \$.06 (G) each running.

Paper Stock60 lb. gloss text and UV coated cover.

PackagingPlain envelopes: Bulk \$.14 (G) each and \$.22 (G) inserted.

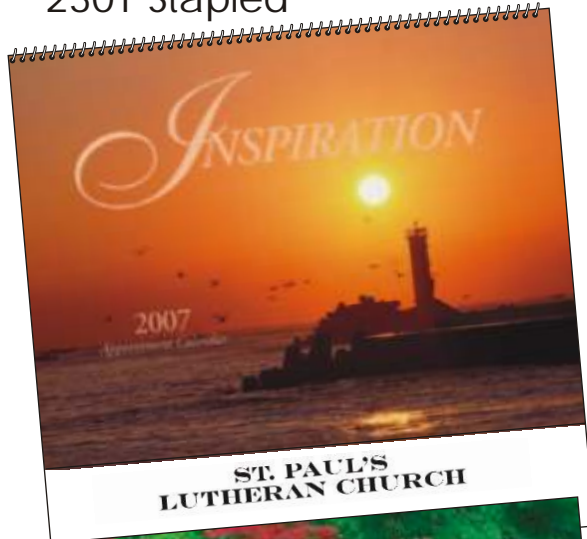
Polybags, calendars inserted: \$.16 (G) each.

Approximate ShippingBulk: 31 lbs. per 160 spiral; 35 lbs. per 185 stapled.

INSPIRATION

230 Spiral

2301 Stapled



13-month calendar

Size: 10 1/2" x 18 1/4" Open 10 1/2" x 10" Closed

Imprint: 9" x 1 1/2"

Pricing			300-2499	2500+
230	Spiral thru	7-31-06	1.11	.99
230	Spiral after	7-31-06	1.22	1.16
2301	Stapled thru	7-31-06	.99	.93
2301	Stapled after	7-31-06	1.11	1.05

2C

Standard Imprint.

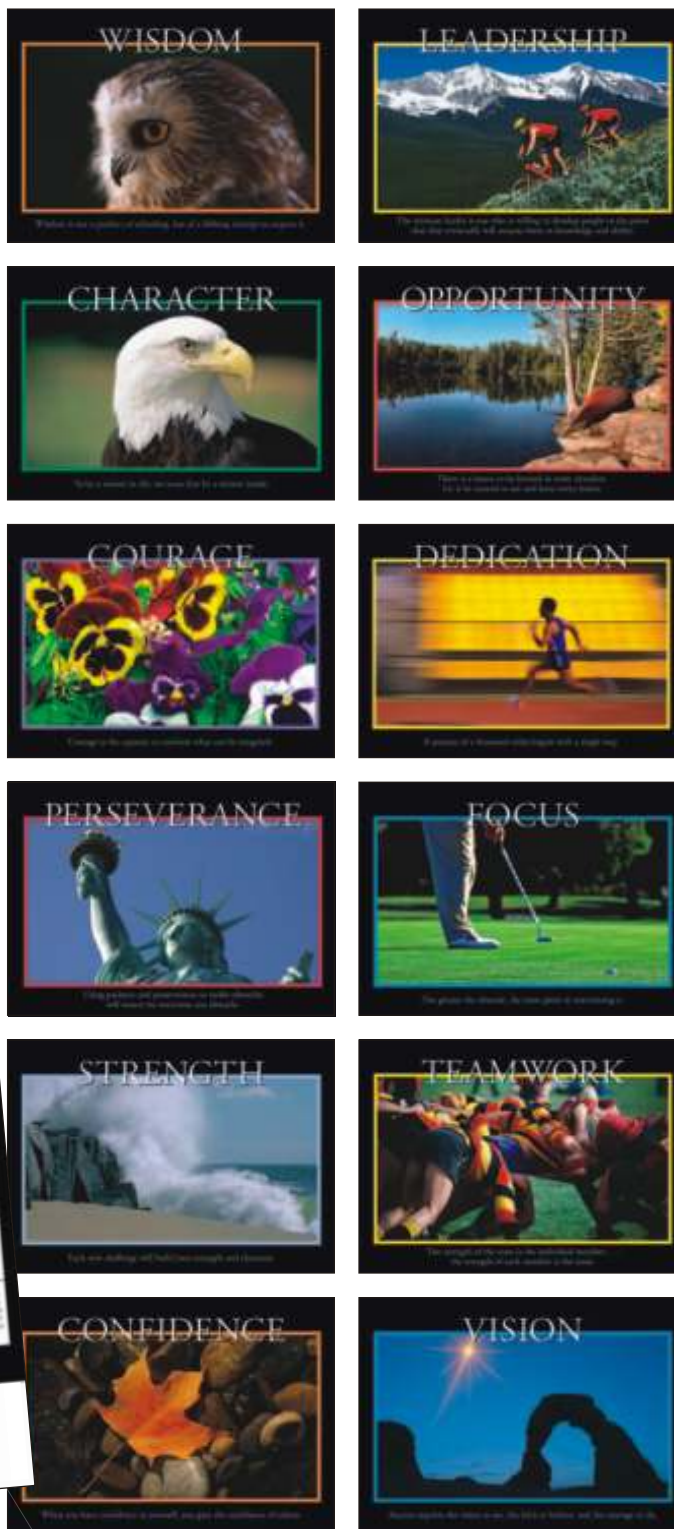
Other Colors See General Information.

Second Color \$24.00 (G) set-up charge, plus \$.06 (G) each running.
Paper Stock 60 lb. gloss text and UV coated cover.Packaging Plain envelopes: Bulk \$.14 (G) each and \$.22 (G) inserted.
Polybags, calendars inserted: \$.16 (G) each.

Approximate Shipping Bulk: 31 lbs. per 160 spiral; 35 lbs. per 185 stapled.

MOTIVATIONS

235 Spiral
2351 Stapled



Motivation

13-month calendar

Size: 10 1/2" x 18 1/4" Open 10 1/2" x 10" Closed
Imprint: 9" x 1 1/2"

Pricing			300-2499	2500+
235	Spiral thru	7-31-06	1.11	.99
235	Spiral after	7-31-06	1.22	1.16
2351	Stapled thru	7-31-06	.99	.93
2351	Stapled after	7-31-06	1.11	1.05

2C

Standard ImprintBlack.

Other ColorsSee General Information.

Second Color\$24.00 (G) set-up charge, plus \$.06 (G) each running.

Paper Stock60 lb. gloss text and UV coated cover.

PackagingPlain envelopes: Bulk \$.14 (G) each and \$.22 (G) inserted.

Polybags, calendars inserted: \$.16 (G) each.

Approximate ShippingBulk: 31 lbs. per 160 spiral; 35 lbs. per 185 stapled.

AMERICA!

240 Spiral
2401 Stapled



13-month calendar

Size: 10 1/2" x 18 1/4" Open 10 1/2" x 10" Closed
Imprint: 9" x 1 1/2"

Pricing			300-2499	2500+	
240	Spiral thru	7-31-06	1.11	.99	
240	Spiral after	7-31-06	1.22	1.16	
2401	Stapled thru	7-31-06	.99	.93	
2401	Stapled after	7-31-06	1.11	1.05	2C

Standard Imprint.

Other Colors See General Information.

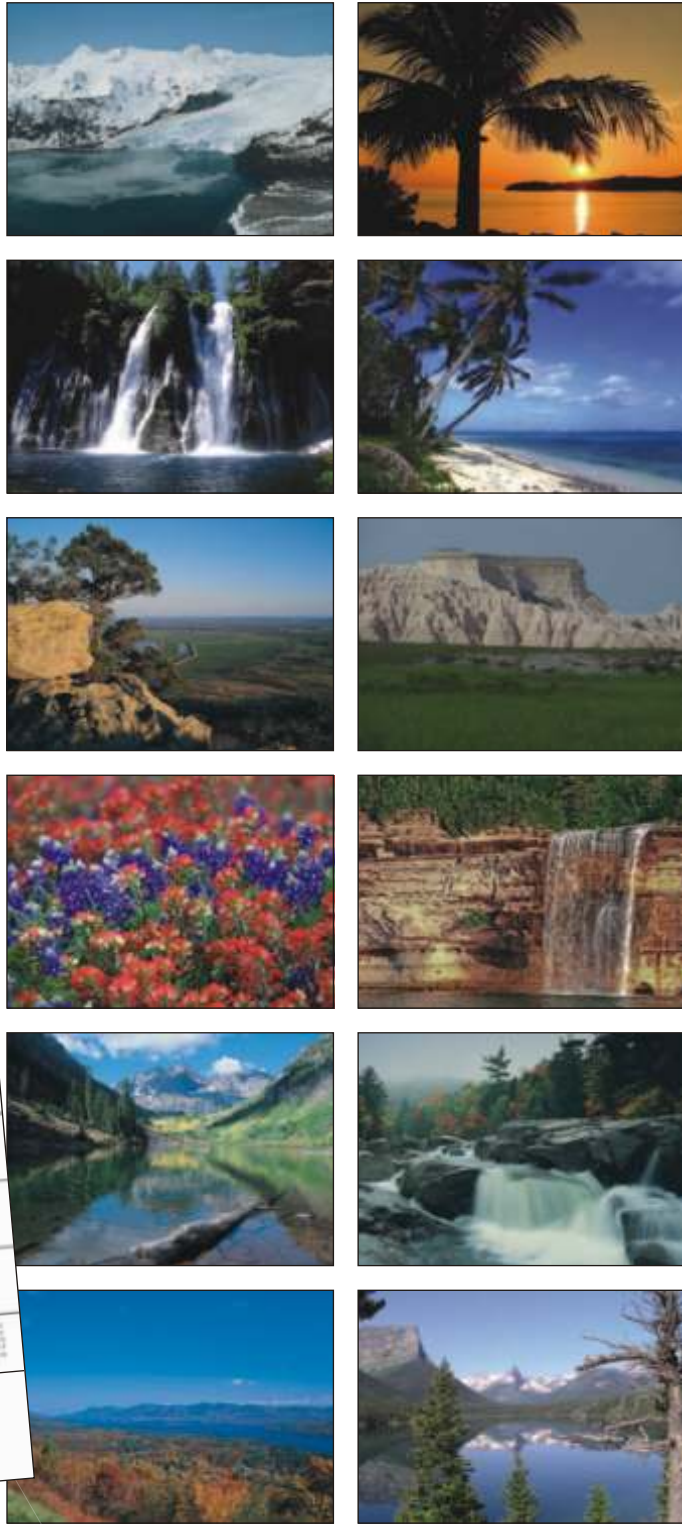
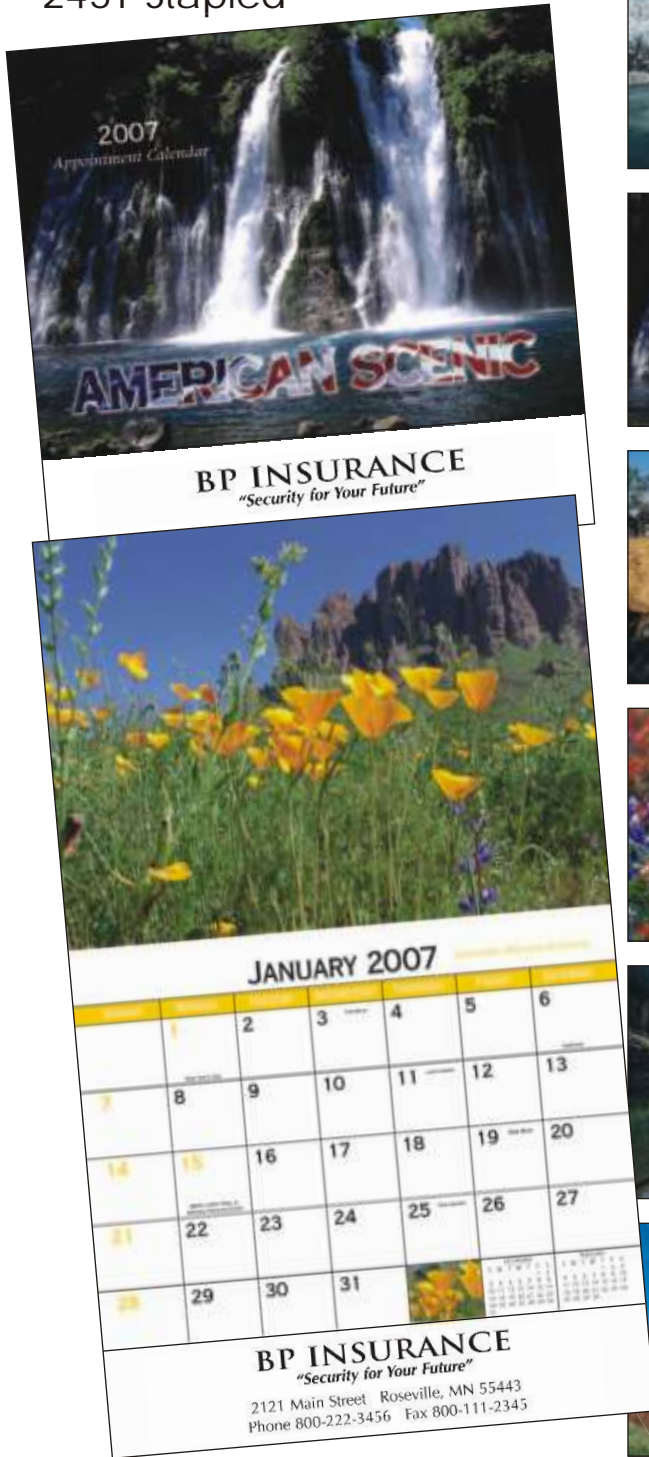
Second Color \$24.00 (G) set-up charge, plus \$.06 (G) each running.
Paper Stock 60 lb. gloss text and UV coated cover.

Packaging Plain envelopes: Bulk \$.14 (G) each and \$.22 (G) inserted.
Polybags, calendars inserted: \$.16 (G) each.

Approximate Shipping Bulk: 31 lbs. per 160 spiral; 35 lbs. per 185 stapled.

AMERICAN SCENIC

245 Spiral
2451 Stapled



13-month calendar
Size: 10 1/2" x 18 1/4" Open 10 1/2" x 10" Closed
Imprint: 9" x 1 1/2"

Pricing			300-2499	2500+	
245	Spiral thru	7-31-06	1.11	.99	
245	Spiral after	7-31-06	1.22	1.16	
2451	Stapled thru	7-31-06	.99	.93	
2451	Stapled after	7-31-06	1.11	1.05	2C

Standard Imprint Black.

Other Colors See General Information.

Second Color \$24.00 (G) set-up charge, plus \$.06 (G) each running.

Paper Stock 60 lb. gloss text and UV coated cover.

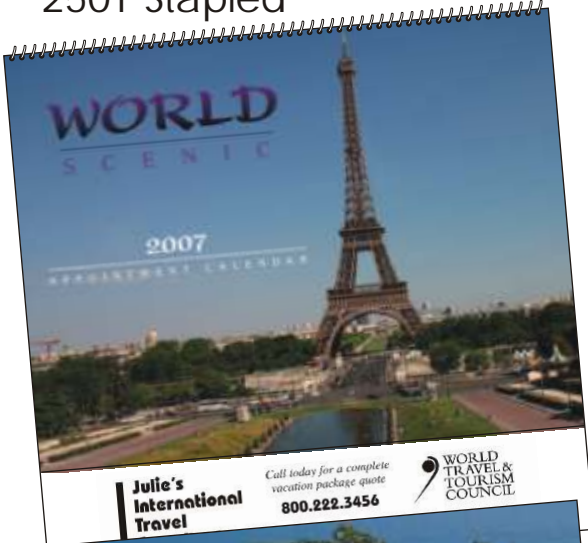
Packaging Plain envelopes: Bulk \$.14 (G) each and \$.22 (G) inserted.

Polybags, calendars inserted: \$.16 (G) each.

Approximate Shipping Bulk: 31 lbs. per 160 spiral; 35 lbs. per 185 stapled.

WORLD SCENIC

250 Spiral
2501 Stapled



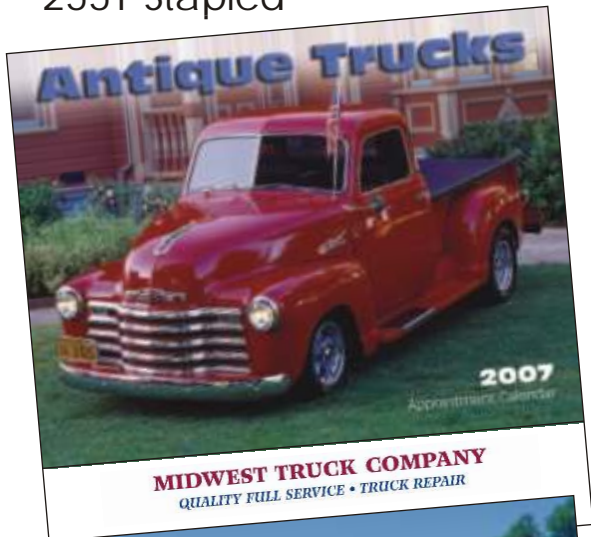
13-month calendar
Size: 10 1/2" x 18 1/4" Open 10 1/2" x 10" Closed
Imprint: 9" x 1 1/2"

Pricing		300-2499	2500+	
250	Spiral thru	7-31-06	1.11	.99
250	Spiral after	7-31-06	1.22	1.16
2501	Stapled thru	7-31-06	.99	.93
2501	Stapled after	7-31-06	1.11	1.05

Standard Imprint. Other Colors See General Information.
Second Color \$24.00 (G) set-up charge, plus \$.06 (G) each running.
Paper Stock 60 lb. gloss text and UV coated cover.
Packaging Plain envelopes: Bulk \$.14 (G) each and \$.22 (G) inserted.
Polybags, calendars inserted: \$.16 (G) each.
Approximate Shipping Bulk: 31 lbs. per 160 spiral; 35 lbs. per 185 stapled.

ANTIQUE TRUCKS

255 Spiral
2551 Stapled



13-month calendar
Size: 10 1/2" x 18 1/4" Open 10 1/2" x 10" Closed
Imprint: 9" x 1 1/2"

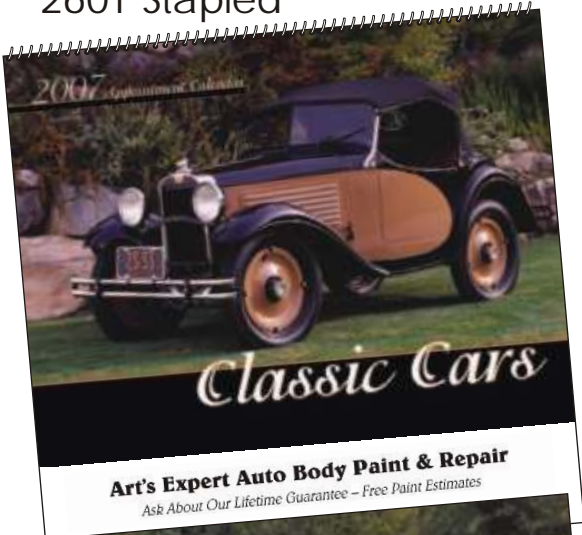
Pricing		300-2499	2500+	
255	Spiral thru	7-31-06	1.11	.99
255	Spiral after	7-31-06	1.22	1.16
2551	Stapled thru	7-31-06	.99	.93
2551	Stapled after	7-31-06	1.11	1.05

2C

Standard ImprintBlack.
Other ColorsSee General Information.
Second Color\$24.00 (G) set-up charge, plus \$.06 (G) each running.
Paper Stock60 lb. gloss text and UV coated cover.
PackagingPlain envelopes: Bulk \$.14 (G) each and \$.22 (G) inserted.
Polybags, calendars inserted: \$.16 (G) each.
Approximate ShippingBulk: 31 lbs. per 160 spiral; 35 lbs. per 185 stapled.

CLASSIC CARS

260 Spiral
2601 Stapled



13-month calendar
Size: 10 1/2" x 18 1/4" Open 10 1/2" x 10" Closed
Imprint: 9" x 1 1/2"

Pricing			300-2499	2500+	
260	Spiral thru	7-31-06	1.11	.99	
260	Spiral after	7-31-06	1.22	1.16	
2601	Stapled thru	7-31-06	.99	.93	
2601	Stapled after	7-31-06	1.11	1.05	2C

2007 Beacon Calendar Line® ASI 39250

Standard ImprintBlack.
Other ColorsSee General Information.
Second Color\$24.00 (G) set-up charge, plus \$.06 (G) each running.
Paper Stock60 lb. gloss text and UV coated cover.
PackagingPlain envelopes: Bulk \$.14 (G) each and \$.22 (G) inserted.
Polybags, calendars inserted: \$.16 (G) each.
Approximate ShippingBulk: 31 lbs. per 160 spiral; 35 lbs. per 185 stapled.

HOT RODS

265 Spiral
2651 Stapled



Vehicles

13-month calendar

Size: 10 1/2" x 18 1/4" Open 10 1/2" x 10" Closed
Imprint: 9" x 1 1/2"

Pricing			300-2499	2500+	
265	Spiral thru	7-31-06	1.11	.99	
265	Spiral after	7-31-06	1.22	1.16	
2651	Stapled thru	7-31-06	.99	.93	
2651	Stapled after	7-31-06	1.11	1.05	2C

2007 Beacon Calendar Lin® ASI 39250

Standard ImprintBlack.

Other ColorsSee General Information.

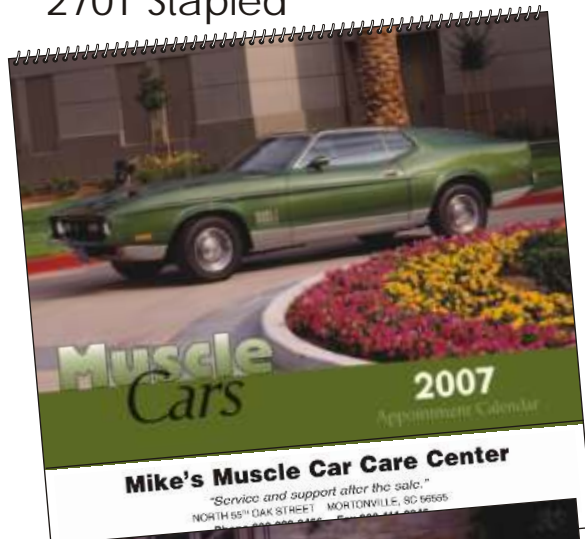
Second Color\$24.00 (G) set-up charge, plus \$.06 (G) each running.
Paper Stock60 lb. gloss text and UV coated cover.

PackagingPlain envelopes: Bulk \$.14 (G) each and \$.22 (G) inserted.
Polybags, calendars inserted: \$.16 (G) each.

Approximate ShippingBulk: 31 lbs. per 160 spiral; 35 lbs. per 185 stapled.

MUSCLE CARS

270 Spiral
2701 Stapled



13-month calendar

Size: 10 1/2" x 18 1/4" Open 10 1/2" x 10" Closed

Imprint: 9" x 1 1/2"

Pricing		300-2499	2500+	
270	Spiral thru	7-31-06	1.11	.99
270	Spiral after	7-31-06	1.22	1.16
2701	Stapled thru	7-31-06	.99	.93
2701	Stapled after	7-31-06	1.11	1.05

Standard Imprint: Black.

Other Colors: See General Information.

Second Color: \$24.00 (G) set-up charge, plus \$.06 (G) each running.

Paper Stock: 60 lb. gloss text and UV coated cover.

Packaging: Plain envelopes: Bulk \$.14 (G) each and \$.22 (G) inserted.

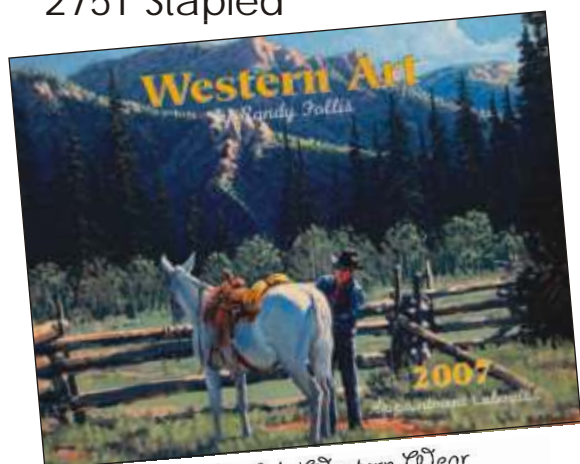
Polybags, calendars inserted: \$.16 (G) each.

Approximate Shipping: Bulk: 31 lbs. per 160 spiral; 35 lbs. per 185 stapled.

WESTERN ART

275 Spiral

2751 Stapled



Rhonda's Western Wear
For All Your Western Wear Needs



Rhonda's Western Wear
For All Your Western Wear Needs

1345 Rodeo Boulevard • Painsville, Texas 34311
Phone 800-123-4455 • Fax 800-123-4466



Western Art

13-month calendar

Size: 10 1/2" x 18 1/4" Open 10 1/2" x 10" Closed

Imprint: 9" x 1 1/2"

Pricing			300-2499	2500+	
275	Spiral thru	7-31-06	1.11	.99	
275	Spiral after	7-31-06	1.22	1.16	
2751	Stapled thru	7-31-06	.99	.93	
2751	Stapled after	7-31-06	1.11	1.05	2C

Standard ImprintBlack.

Other ColorsSee General Information.

Second Color\$24.00 (G) set-up charge, plus \$.06 (G) each running.

Paper Stock60 lb. gloss text and UV coated cover.

PackagingPlain envelopes: Bulk \$.14 (G) each and \$.22 (G) inserted.

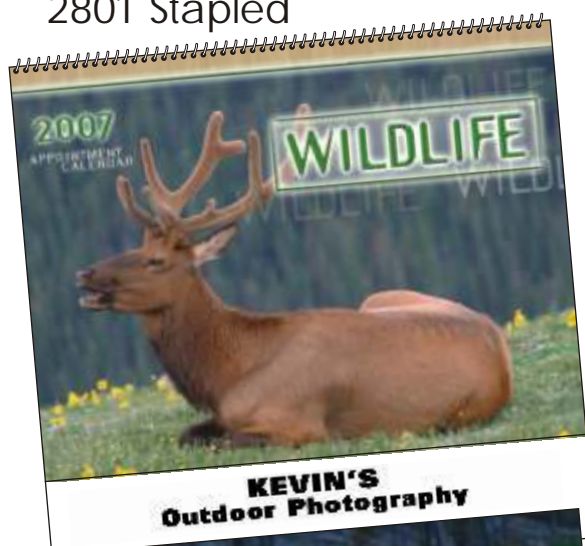
Polybags, calendars inserted: \$.16 (G) each.

Approximate ShippingBulk: 31 lbs. per 160 spiral; 35 lbs. per 185 stapled.

2007 Beacon Calendar Line® ASI 39250

WILDLIFE

280 Spiral
2801 Stapled



13-month calendar
Size: 10 1/2" x 18 1/4" Open 10 1/2" x 10" Closed
Imprint: 9" x 1 1/2"

Pricing			300-2499	2500+	
280	Spiral thru	7-31-06	1.11	.99	
280	Spiral after	7-31-06	1.22	1.16	
2801	Stapled thru	7-31-06	.99	.93	
2801	Stapled after	7-31-06	1.11	1.05	2C

Standard Imprint.

Other Colors See General Information.

Second Color \$24.00 (G) set-up charge, plus \$.06 (G) each running.
Paper Stock 60 lb. gloss text and UV coated cover.

Packaging Plain envelopes: Bulk \$.14 (G) each and \$.22 (G) inserted.
Polybags, calendars inserted: \$.16 (G) each.

Approximate Shipping Bulk: 31 lbs. per 160 spiral; 35 lbs. per 185 stapled.

GENERAL INFORMATION

ORDER INFORMATION

PURCHASE ORDERS: The following information must be included on your purchase order: your company name, company address, company phone and fax number, contact name, requested ship date, product number and description ordered, quantity, product color, layout instructions for artwork, imprint color, unit cost, additional charges, and shipping instructions.

ORDER ACKNOWLEDGEMENT: Confirmation of calendar product number, quantity, ship to address, shipping method, ship date, and price will be acknowledged by fax.

LESS THAN MINIMUM: \$30.00 (G), absolute minimum of 10 for appointment calendars, 25 for commercial planners, and 50 for full year view calendars.

PRODUCTION SCHEDULE: Normal production time is 7 working days after receipt of complete order information and approved artwork.

OVERRUN/UNDERRUN: Every effort will be made to ship the quantity on your purchase order. All orders are subject to a 5% overrun or underrun and will be shipped and billed accordingly. If exact quantity is requested, there will be a 10% surcharge.

STOCK AVAILABILITY: After November 1, please specify a second choice of calendar style. Contact customer service for inventory availability.

ARTWORK AND IMPRINT INFORMATION

ARTWORK NEEDED: Clean, black-and-white, camera-ready artwork is preferred. Artwork will be reviewed and if cleanup is needed, we will notify you in advance. A cleanup charge of \$30.00 (X) is minimum.

IMPRINT COLORS: The standard imprint color is black and if you choose an imprint color from our color palette (see page 24), add:

- \$12.00 (G) wash-up charge per order for commercial calendars shown on pages 2 and 3.
- \$.06 (G) wash-up charge per calendar for all appointment style calendars.

If you choose any other imprint color, add:

CANCELLATION: Orders will be billed for work incurred.

- \$24.00 (G) ink match charge per color and \$12.00 (G) wash-up charge per order for commercial calendars.
- \$24.00 (G) ink match charge per color and \$.06 (G) wash-up charge per calendar for all appointment styles.

COMBINING STYLES: All spiral calendars can be assorted 100 per theme and all stapled calendars can be assorted 100 per theme. Minimum per order must be 300. Ad copy and imprint color must remain the same for entire order. Full year view and commercial planners cannot be combined.

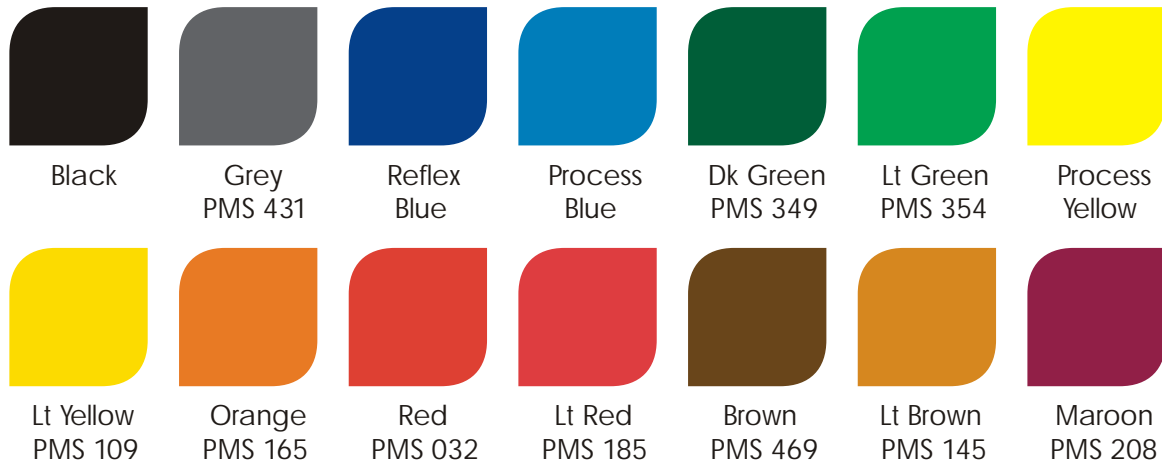
PROOFS: E-mail, fax, or one-color proof: \$5.00 (G); two-color proofs: \$10.00 (G).

HALFTONE PHOTOS: Halftone photos are available in your ad area for \$22.00 (G). There may be an additional charge if your halftone needs to be touched up. No charge for repeat halftones and halftones supplied digitally.

GENERAL INFORMATION

OPTIONAL IMPRINT COLORS: Optional imprint color swatches shown here are not exact Pantone colors. This catalog was printed using four-color process. Use the Pantone number listed below each color when specifying imprint color needed, and refer to your Pantone color formula guide for accurate color.

STANDARD COLOR PALETTE



Pantone is a registered trademark of Pantone, Inc.

SHIPPING INFORMATION

SHIPPING: Orders are shipped FOB factory. Shipping is billed and added to invoice. Orders are normally shipped via Ground, unless otherwise specified.

DROP SHIP: Add \$4.50 (G) for each drop shipment in the continental U.S. Add \$20.00 (G) for each drop shipment outside the U.S.

C.O.D. SHIPMENTS: Add \$25.00 (G) per box. Pre-arrangements must be made.

IMPRINTED ENVELOPES: Add \$30.00 (G) plus \$.07 (G) each running.

MAILING SERVICE: Individual mail for customer supplied zip sorted labels or digital files, add: \$1.25 (G) each for 200-499; \$.50 (G) each for 500-999; \$.40 (G) each for 1000+. Labels should be pressure sensitive. Tubed calendars will incur an extra residual shape charge. Postage costs will be billed at current rates.

U.S. postal regulations apply. Minimum 200 pieces or 50 lbs. each. Envelope cannot exceed 15.9 oz. to go bulk mail.

SHIPPING SCHEDULE: We will ship as early as our production permits, unless a specified ship date is given. Orders put in storage will be sent a shipping notice when removed and shipped. All truck shipments will go prepaid unless specified. If we remove an order from storage prior to the date indicated on your P.O., you will be charged \$40.00 (G).

STORAGE RELEASE DATES: Please specify one of the following storage release dates:

May 1
June 1
July 1
August 1
September 1
September 15
October 1
October 15
November 1
November 15
December 1

ARTWORK SPECIFICATIONS

2007 CALENDAR ARTWORK SPECIFICATIONS

All files and directories need to be printed out and included when jobs are sent in electronically. Indicate purchase order number with your file.
Send artwork to ad@beaconpromotions.com



PREFERRED APPLICATIONS:

Adobe Creative Suite Software
Adobe Illustrator™ Version 11 or older
Adobe Photoshop™ Version 8 or older



PREFERRED FILE FORMATS:

Any version of Adobe Illustrator™ Version 11 or older
Any version of Adobe Photoshop™ Version 8 or older
Scanned artwork should be submitted in a vector art program such as Illustrator or a compatible program.
If this is not possible, submit bitmaps scanned at 800 dpi minimum.
Create outlines on all text in the artwork files provided.



FILE FORMATS WE WILL ACCEPT:

100 MB Zip Disk
250 MB Zip Disk
CD-ROM
400K, 800K, or high density 3.5 or 5.25 PC compatible floppies
(only for applications that are cross platform compatible)
E-mail (archiving in ZipStuffit™ is recommended)



USE OF WEB PAGE ARTWORK:

We cannot accept artwork used from Web sites or that originates on the Internet.



FILM/PLATE REQUIREMENTS:

Include all screen and printer fonts.
Include all artwork files.
Include all embedded art files.
Include color break or blend instructions.
Portrait files saved CMYK format with a resolution of 300 dpi or higher.

Artwork lines should not be thinner than .5 pts. (do not use hairline rules).
Scans to be done as close as possible to actual size.



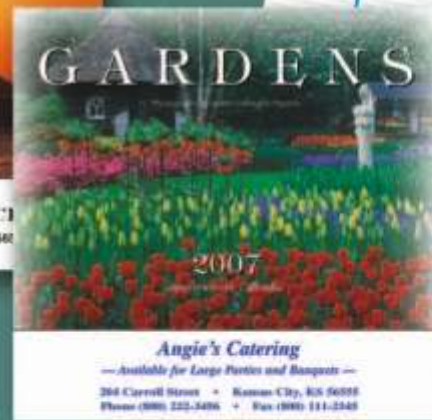
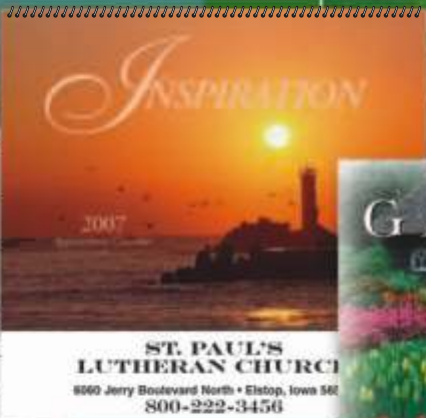
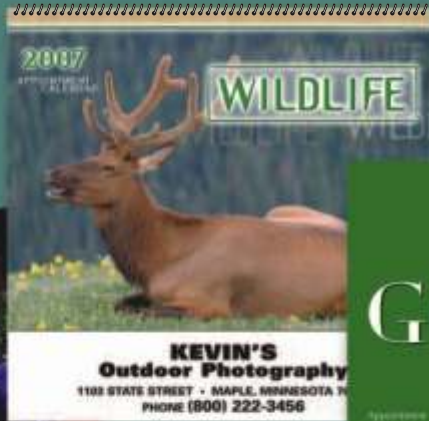
USE OF TRAP:

Standard trap is .35 pts.
Use a 1 pt. overprint stroke in Illustrator files.

Any variations outside the specified file formats will incur additional charges. Hardware and software updates may have occurred since this list was compiled. Contact us for updated information if you have questions.



Beacon
Calendar Line™



Beacon
Promotions, Inc.

Beacon Calendar Line™ ASI 39250
Beacon Brand Builders™ ASI 39250
www.beaconpromotions.com



UPIC: Beaconp